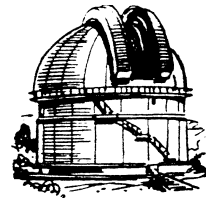

Journal

of the

Nottingham Astronomical Society

June 2018



In this issue

- Sky Notes for June
- Diary Dates 2018:
Meetings at Gotham and Plumtree
- Other events of interest
- E-Services
- Social and Practical Astronomy – report of last month's meeting and preview of future events
- Society Information
- Membership application form

Thursday, 7th

Gotham Memorial Hall
Gotham, NG11 0HE

8 pm (doors open at 7 pm)

This evening we give a warm welcome to

Bob Mizon, MBE, FRAS

of the

BAA Commission for Dark Skies

who will be speaking on

Dark Future?

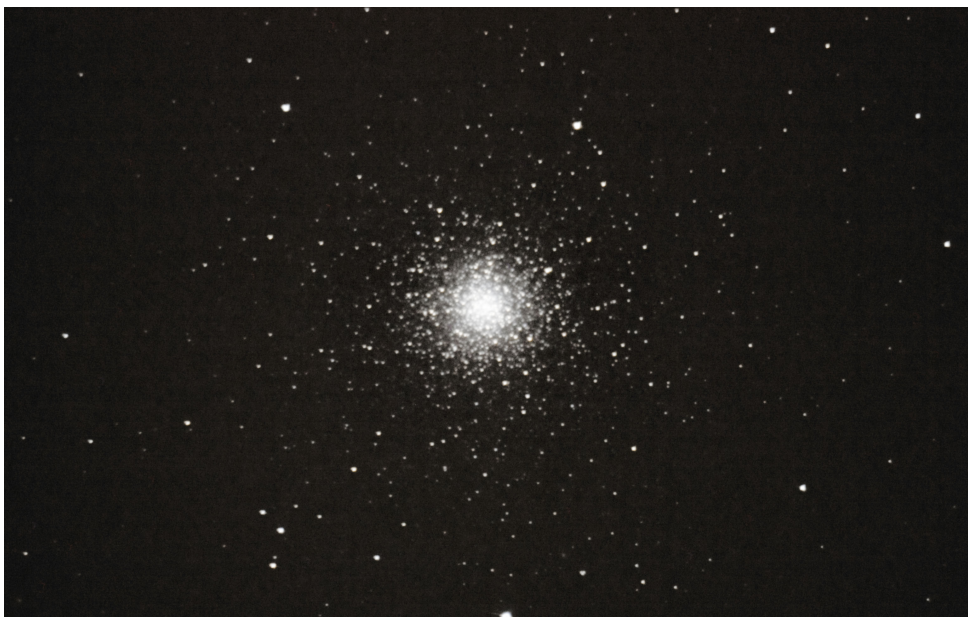
Can the UK's dark spaces survive?

(A talk postponed from March)

THE GLOBULAR CLUSTER M3 in Canes Venatici

Imaged with a Canon 450D camera at the prime focus of the Editor's 30-cm reflector

Exposure time 6.5 minutes at ISO 800



Sky Notes

June 2018



Compiled by Roy Gretton

All times given below are in British Summer Time (BST)

PHASES OF THE MOON

<i>Phase</i>	<i>Date and time</i>
Last Quarter	7:33 pm on June 6 th
New Moon	8:44 pm on the 13 th
First Quarter	11:52 am on the 20 th
Full Moon	5:54 am on the 28 th

This month the Moon is closest to the Earth on the 14th, and furthest on the 2nd.

THE PLANETS

*As the sky gets darker after sunset at the start of this month, two stand-out planets can be observed in opposite parts of the sky: **Venus** in the northwest and **Jupiter** in the southeast. Other than the Moon, these are the brightest objects in the night sky, and are almost unmissable, even to a casual observer.*

Mercury passes through superior conjunction on June 6th, thereafter becoming an evening object for the rest of the month and for the whole of July. It may be spotted, just above the northwestern horizon, at the end of June.

Venus is a brilliant object in the northwest after sunset, shining at magnitude -4.0 and gradually brightening. Its angular diameter will be approaching 16 arcseconds by the end of the month, and by then it will be more than 40 degrees from the Sun.

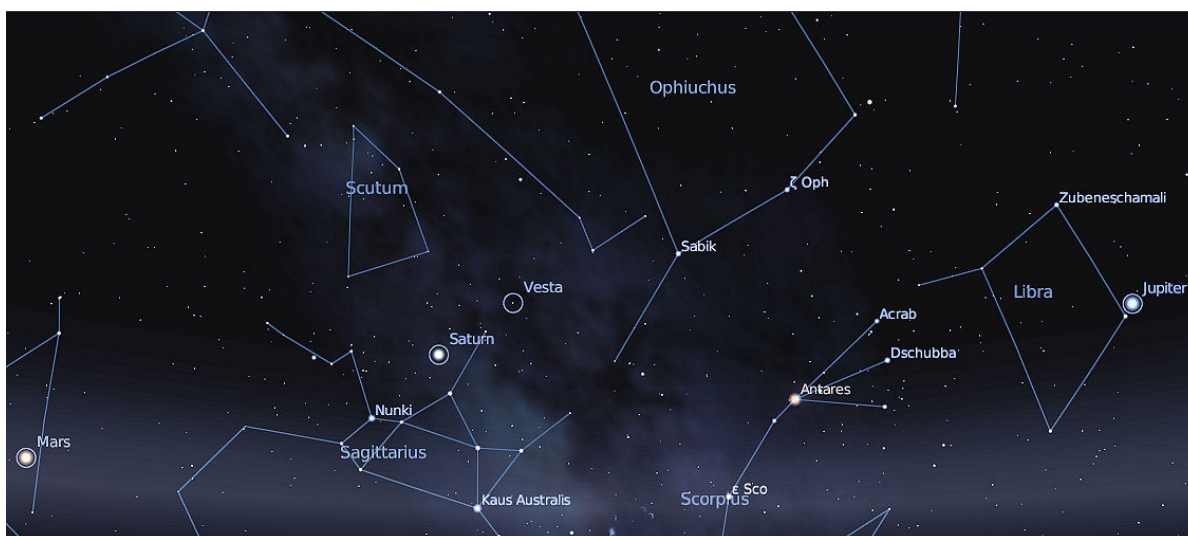


***Looking WNW
at 10:30pm
on June 30th***

Mars will brighten by a whole magnitude this month, becoming almost as bright as Jupiter by the end of June, so by then we shall have three bright planets to admire. Mars, with its distinct orange hue, will unfortunately be about 22 degrees south of the celestial equator (great for southern hemisphere observers, but disadvantageous for those in the UK), and its angular diameter will have expanded to nearly 21 arcseconds.

Jupiter, in the constellation of Libra, will be fairly well placed for observation as June begins. Having an equatorial diameter of 44 arcseconds, and shining at magnitude -2.4 , it will be well worth a look, either with the naked eye, or with binoculars or a telescope. For telescopic observers, a *shadow transit* of **Io** will occur on the evening of June 1st, of **Europa** on the evening of the 6th, of **Ganymede** on the 18th, and **Io** again on the 24th. Watch out for a dark spot slowly crossing the planet's disk on each occasion.

Saturn, in the constellation of Sagittarius, rises just after 11 pm as June begins, and will be due south at 3 am. Being more than 22 degrees south of the celestial equator throughout the month, this gas giant is far from ideally-placed for northern hemisphere observers. However, its brightness will be increasing, reaching magnitude zero at the close of June. By this time it will be a little more than 9 astronomical units from Earth, with the north pole tilted toward us at an angle of about 26 degrees.



Looking south at 1 am on June 9th

Uranus must now be regarded as unobservable as it is very close to the Sun.

Neptune, in the constellation of Aquarius, is now a morning object, but will be very difficult to observe in a sky that is never totally dark.

METEORS

With its lack of true darkness, June is not the best time of the year for observing meteors, and there are no major showers during the month.

***ADVANCE NOTICE** In case you miss the next issue of the Journal*

There will be a total eclipse of the Moon on the evening of July 27th.

Shortly before 9pm the fully-eclipsed Moon will be rising, providing an unusual opportunity for observers and photographers.

DIARY DATES 2018

Monthly Meetings of the Nottingham Astronomical Society

1) Meetings at Gotham Memorial Hall

Nottingham Road, Gotham, NG11 0HE

Held on the **FIRST Thursday** of each month except **August**

Doors open at 7pm for 8pm start.

*These events are normally centred around a talk by a visiting speaker, except Open Evenings, when NAS members provide the activities. Normally we have a **Library** and a **Helpdesk** open at each meeting.*

<u>Date</u>	<u>Topic</u>	<u>Speaker</u>
June 7 th	Dark Future?	Bob Mizon
July 5 th	Cassini's Final Science	Dr Phil Sutton <i>University of Lincoln</i>
August 4 th (Saturday)	Annual Society BBQ at the Observatory	
September 6 th	The Adventures of Curiosity on Mars	Prof Sanjeev Gupta <i>Imperial College, London</i>
October 4 th	Juno – the Answers	Prof Emma Bunce <i>University of Leicester</i>
November 1 st	Annual General Meeting	
December 6 th	Transient Events in Astronomy or <i>Things that go bump in the night</i>	Prof Dame Jocelyn Bell Burnell DBE, FRS, FRSE, FRAS

2) Social and Practical Astronomy Meetings at the Burnside Memorial Hall, Plumtree

Church Hill, Plumtree, Nottingham, NG12 5ND

Held on the **THIRD Thursday** of each month from **7:30pm**

These meetings are of a more informal nature, providing opportunity for members and guests to share their hobby over a cup of tea or coffee, as well as listening to a short talk.

The next meeting will be on June 21st (see further details below)

Check our website: www.nottinghamastro.org.uk
for the latest information about the Society's meetings
and for further information about the talks and speakers

Events in the coming months open to everyone

(follow hyperlinks for more information and how to book)

2 nd June	Webb Deep Sky Society Annual Meeting , Cambridge
7-8 July	BAA Summer Meeting , Coventry
28 th July	The planet Mercury and the BepiColombo mission . Society for Popular Astronomy, London
7-9 September	BAA Weekend Meeting , Christchurch
29 th September	BAA Variable Stars, Photometry and Spectroscopy Workshop , London
6 th October	BAA Back To Basics Workshop , Bexleyheath
12-13 October	International Astronomy Show , Stoneleigh, Warwickshire
27 th October	Society for the History of Astronomy, Autumn Conference , Birmingham

The Nottingham Astronomical Society: E - SERVICES

Whether or not you are a NAS member, you can keep up to date with details of the Society's meetings and other events by visiting the NAS website:

www.nottinghamastro.org.uk

NAS on Facebook

You are welcome to connect with other members and friends of the NAS on Facebook by going to:

<http://www.facebook.com/nas.org.uk>

NAS on Twitter

The Society has a Twitter account at <https://twitter.com/NottinghamAstro>

NAS Journal e-mailing list

To register for your monthly e-mailed copy of the NAS Journal, just e-mail

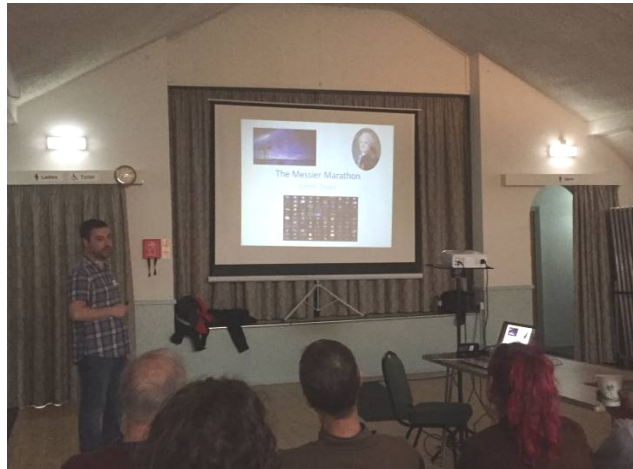
secretary@nottinghamastro.org.uk

You don't have to be a Society member to take advantage of this service.

If you happen to change your email address, please remember to inform the Society by emailing us at treasurer@nottinghamastro.org.uk

Social and Practical Astronomy, Plumtree

At the **May** meeting at Plumtree, NAS member, Gareth Davies talked about his project to observe all the Messier objects from his back garden. Gareth took us on a tour of his journey to discover more about the Messier Catalogue and his desire to find the perfect telescope.



Gareth has now seen most of the Messier Objects which are visible from his location, and he is working out where and when he can tick off the remaining items. The telescope collection continues to grow.

At the end of Gareth's talk several of us went outside and observed the crescent Moon and Venus in the twilight sky, pictured here.



The **June** meeting will see Alan Heath come to talk to us about his passion, observing the planets. Alan has had a life-long interest in the natural sciences, and has been observing the solar system for nearly 70 years. Alan was the Director of the British Astronomical Association's Saturn Section for 30 years (one Saturnian year), and continues to submit observational data to the BAA.

James Dawson

NAS Helpdesk

helpdesk@nottinghamastro.org.uk

Nottingham Astronomical Society

Affiliated to the British Astronomical Association
Member of the Federation of Astronomical Societies
Member of the Society for Popular Astronomy
Supporters of the Commission for Dark Skies

CHAIRMAN:

John Hurst

e-mail: president@nottinghamastro.org.uk

VICE CHAIRMAN:

Roy Gretton

e-mail: vicepresident@nottinghamastro.org.uk

SECRETARY:

(vacant post:)

e-mail: secretary@nottinghamastro.org.uk

TREASURER:

David Anderson

e-mail: treasurer@nottinghamastro.org.uk

JOURNAL EDITOR:

Roy Gretton

e-mail: journal@nottinghamastro.org.uk

CURATOR OF INSTRUMENTS:

Leigh Blake

e-mail: curator@nottinghamastro.org.uk

DIRECTOR OF OBSERVING:

David Buxton

email: observatory@nottinghamastro.org.uk

Observatory line: 07726 940700 (line open during observing sessions)

Meetings

Our formal meetings, often with an illustrated talk by a guest speaker, are held on the first Thursday of each month (except in August) at:

**Gotham Memorial Hall
Gotham
Nottingham NG11 0HE**

Doors open	7.00pm
Meetings start	8.00pm
Meetings end	10.00pm

These meetings are open to the public, and visitors are welcome to attend.

Annual subscriptions 2018

Full	£30
Joint rate for partners living at the same address	£45
Under-18s and full-time students	£5

Subscriptions become due on 1st January. Half-price subscription is charged if joining after 30th June (minimum subscription £5).

Please make cheques payable to:
Nottingham Astronomical Society.

If you would like more information about the **Nottingham Astronomical Society**, or would like to become a member, please contact the Secretary secretary@nottinghamastro.org.uk or speak to any NAS committee member at one of the regular monthly meetings. A membership application form is inside this issue of the Journal.

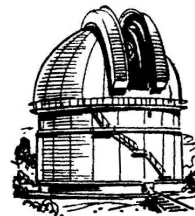
The Nottingham Astronomical Society

The Nottingham Astronomical Society, and/or the Editor accept no responsibility for any errors that may occur within this publication. Any views expressed in the **NAS Journal** are those of the individual authors and not necessarily endorsed by the Nottingham Astronomical Society, its Committee or Members.

NOTTINGHAM ASTRONOMICAL SOCIETY

Founded in 1946 for all interested in astronomy
Affiliated to the British Astronomical Association
Member of the Federation of Astronomical Societies

Registered Charity No. 1174745
Member of the Society for Popular Astronomy
Supporter of the Commission for Dark Skies



Membership application and Gift Aid declaration

Title:

Full name:

Full home address:

Postcode:

Telephone:

e-mail address:

Subscription rate:	Full	(year)	(half year)
	Partnership	(year)	(half year)
	Under-18 and full-time students		

Partnership = two members living together as a couple at the same address

I wish my subscriptions to be eligible for Gift Aid **Yes / No**

Gift Aid declaration

(HMRC reference XR32048)

I want Nottingham Astronomical Society to treat all subscriptions and donations that I make from the date of this declaration as Gift Aid donations, until I notify you otherwise.

I pay an amount of UK Income Tax and/or Capital Gains Tax at least equal to the tax that Nottingham Astronomical Society reclaims on my donations in the appropriate tax year.

Signature:

Date: