

---

# Journal

of the

## Nottingham Astronomical Society

**April 2022**

---



### In this issue

- A Message from the Chairman
- Sky Notes for April
- Diary Dates for 2022
- Social and Practical Astronomy: meeting report
- E-Services
- Comet hunting with my eVscope
- Unistellar eVscope and the Sun
- The Editor's first novel
- Advertisements
- Society Information

**Thursday, April 7<sup>th</sup>**

**Nottingham Emmanuel School**

Gresham Park Road,  
West Bridgford,  
Nottingham, NG2 7YF

**7:45pm (doors open at 7:15pm)**

**This evening we welcome**

**Prof Ian Morrison**

Emeritus Gresham  
Professor of Astronomy,  
University of Manchester  
who will be speaking on

**Our Island Universe: the Milky Way**

**Its place in time and space**

### **Chairman's Message – April 2022**

Hello everyone, I hope you enjoyed the talk about Exoplanets in March by Don Pollaco. In April we have the welcome return of Ian Morrison to tell us about our place in space. Meanwhile things have been fairly quiet until earlier this week when we heard about a planning permission proposal for a broiler factory to be located about 1km south of the observatory next to the little village of Owthorpe. So a few of us sharpened our pitchforks and went along to a meeting at their village hall to talk about the situation. It is fair to say that none of them were fans of the proposal and as of now there are over 100 objections to the planning proposal. We have written letters of opposition and Mike, our treasurer, made some great points at the meeting and followed this up with a letter to the council. So our heartfelt thanks for his action there. I believe he is preparing a statement for the Journal. Needless to say a large industrial placement due south of the observatory would not be at all welcome. In other news we had a very social Plumtree meeting discussing various objects and it was great to see everyone there. Once the ground dries out a little we must have a few more observing nights, up at Cotgrave – particularly if there is a possibility our days may be numbered.

Best wishes to all.

**Julian**, NAS chair

# Sky Notes

## April 2022

Compiled by Roy Gretton

*All times given below are in British Summer Time*



### PHASES OF THE MOON

<i>Phase</i>	<i>Date</i>
New Moon	April 1 <sup>st</sup> and 30 <sup>th</sup>
First Quarter	April 9 <sup>th</sup>
Full Moon	April 16 <sup>th</sup>
Last Quarter	April 23 <sup>rd</sup>

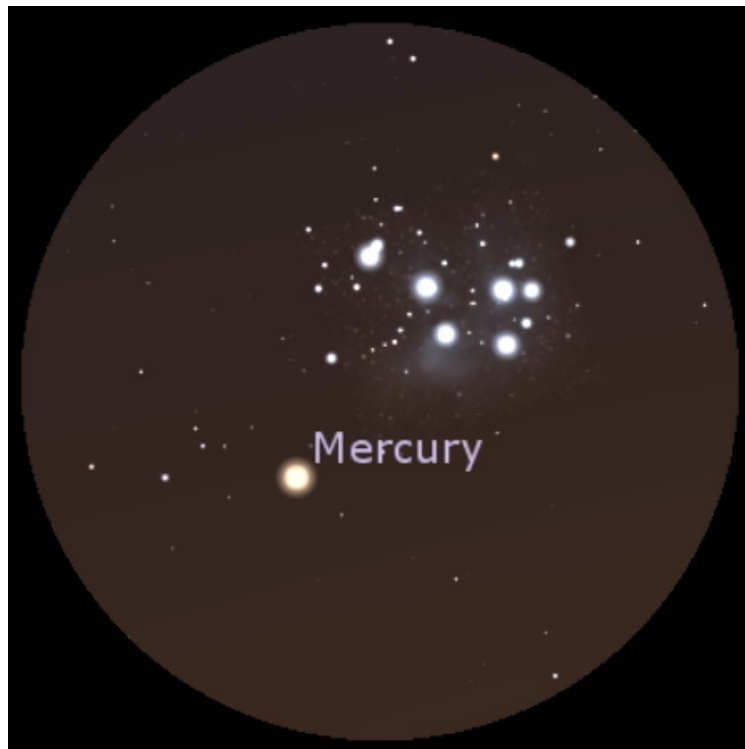
This month the Moon is closest to Earth on the 19<sup>th</sup>, and furthest on the 7<sup>th</sup>.

### THE PLANETS

This is the month of **Mercury**, at least in terms of evening observation. After passing through superior conjunction on April 2<sup>nd</sup>, the planet moves out from the Sun, reaching greatest eastern elongation on the 29<sup>th</sup>, when it will be 21 degrees from the Sun, and shining at magnitude approximately zero. At this stage it will be setting more than two hours after sunset, and will be in the constellation of Taurus, close to the Pleiades star cluster. This should create a beautiful spectacle through binoculars or a small telescope, with Mercury and the Pleiades in the same field of view. Opportunities for imaging also come to mind.



Looking west at 9:30pm on April 29<sup>th</sup>



**Mercury** and the **Pleiades** viewed through a small telescope at 9:30pm on April 29<sup>th</sup>

**Venus** continues to be a brilliant object (magnitude -4.2) in the morning sky, but, rising only one hour before the Sun, will be difficult to spot very low down in a bright sky.

**Mars** continues the slow journey that will bring it to opposition in December. By the end of April it will be rising about an hour and a half before the Sun. Its apparent diameter will still be less than six arcseconds, and its magnitude +0.9.

**Jupiter** is just creeping into the morning sky, but will be very difficult to observe this month.

**Saturn**, still close to the Sun, will be rising about 4 am by the end of April.

**Uranus** disappears into the sunset glow this month.

**Neptune** should be regarded as unobservable this month.

## **METEORS**

The **Lyrids** are April's main shower, reaching maximum activity on the 22<sup>nd</sup>, when 15 events per hour can be expected under ideal conditions.

## DIARY DATES 2022

### Monthly Meetings of the Nottingham Astronomical Society

**1. Meetings at  
Nottingham Emmanuel School  
Gresham Park Road,  
West Bridgford,  
Nottingham, NG2 7YF**

Held on the **FIRST Thursday** of each month except **August**  
**Doors open at 7:15pm for 7:45pm start.**

*These events are normally centred around a talk by a visiting speaker,  
except Quiz Nights, etc, when NAS members provide the activities.  
Normally we have a **Helpdesk** open at each meeting.*

Date	Topic	Speaker
April 7 <sup>th</sup>	Our Island Universe: the Milky Way, its place in time and space	<b>Prof Ian Morrison</b> Emeritus Gresham Professor of Astronomy
May 5 <sup>th</sup>	Supernovae	<b>Dr Matt Nicholl</b> University of Birmingham
June 9 <sup>th</sup> *	Imaging from light polluted sites	<b>Peter Jenkins</b> FRAS
July 7 <sup>th</sup>	Mars	<b>Richard McKim</b> Director of the BAA Mars Section

\* June 2<sup>nd</sup> is a national holiday

### **2. Social and Practical Astronomy Meetings at the Burnside Memorial Hall, Plumtree**

Church Hill, Plumtree, Nottingham, NG12 5ND  
Held on the **THIRD Thursday** of each month from **7:30pm**

*These meetings are of a more informal nature, providing opportunity for  
members and guests to share their hobby over a cup of tea or coffee,  
as well as listening to a short talk or discussion*

**The next meeting will be on April 21<sup>st</sup>**

## Social and Practical Astronomy, Plumtree, March 2022

Our March Plumtree meeting was more of an opportunity to mingle and chat to others rather than being a specific astronomy-themed event.

I had acquired a lot of 8" x 10" photographs of various astronomical objects, either taken through telescopes, or with a standard 50mm lens on a camera. They originated from the Royal Observatory, Edinburgh and featured a combination of northern and southern hemisphere deep sky objects, a number of comets, as well as images of observatories from around the world. Some of the photographs had information printed on the reverse and others didn't.

In advance of the meeting I had ascertained who would be coming that night and I had emailed people a copy of one of these images and asked them to prepare two sentences about the subject of the photograph.

On the night we all paired up and had one minute to talk to the other person about the image, then the other person reciprocated. After a total of about 3 minutes, everyone rotated and the process started again. [Image right: Julian not paying attention to Chris' two sentences]



We did this for about 80 minutes and still had not managed to rotate around everyone.

I think there was lots of chatting about non-astronomy topics but this was a great opportunity to get an opportunity to talk one-on-one with most of the others in the group. We often turn

up to meetings and only speak to a few people, so this was a good opportunity to broaden our knowledge of each other. We are a society after all.

The feedback I've had has been very positive and I suspect we'll do something similar again in the future.

It had been our chairman's birthday the weekend before and so Chris made Julian a Birthday cake which didn't last very long...

If everyone who prepared two sentences could forward their sentences to me I will include these in the next edition of the Journal alongside the image in question.

I'm really grateful to everyone who came along and for preparing something in advance.

I haven't even thought about the **April** Plumtree Meeting. If you have any ideas for April, or for later in the year, or have something you want to talk about, let me know.

**James Dawson**

[helpdesk@nottinghamastro.org.uk](mailto:helpdesk@nottinghamastro.org.uk)

### **The Nottingham Astronomical Society: E - SERVICES**

Whether or not you are a NAS member, you can keep up to date with details of the Society's meetings and other events by visiting the NAS website:

[www.nottinghamastro.org.uk](http://www.nottinghamastro.org.uk)

#### **NAS on Facebook**

You are welcome to connect with other members and friends of the NAS on Facebook by going to: <http://www.facebook.com/nas.org.uk>

#### **NAS on Twitter**

The Society has a Twitter account at <https://twitter.com/NottinghamAstro>

#### **NAS Journal e-mailing list**

To register for your monthly e-mailed link to the NAS Journal, and a copy of our SkyNotes, just e-mail [secretary@nottinghamastro.org.uk](mailto:secretary@nottinghamastro.org.uk)

You don't have to be a Society member to take advantage of this service.

*If you happen to change your email address, please remember to inform the Society by emailing us at [treasurer@nottinghamastro.org.uk](mailto:treasurer@nottinghamastro.org.uk)*

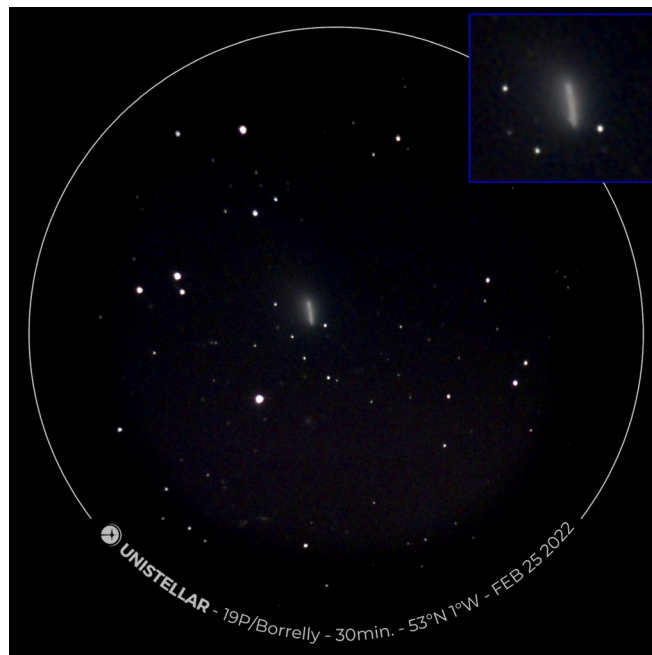


## Comet Hunting with my eVscope by Mark Fairfax

**1. Comet C/2019 L3 Atlas** in Gemini (magnitude +12.4) on Tue 22nd Feb at 21:40.  
10 mins Enhanced Vision with Optolong L-Pro Broadband light pollution filter.  
(Not quite centred as I had to enter the coordinates manually as not in the Unistellar database).



**2. Comet 19P/Borrelly** in Aries (magnitude +8.4) on Fri 25th Feb at 20:57  
30 mins Enhanced Vision and no filter.  
I thought this was going to be far too low down in the night sky below my neighbour's three-storey house but was pleasantly surprised, (a little light pollution creeping into the bottom of the image plus probably some thermals from houses).

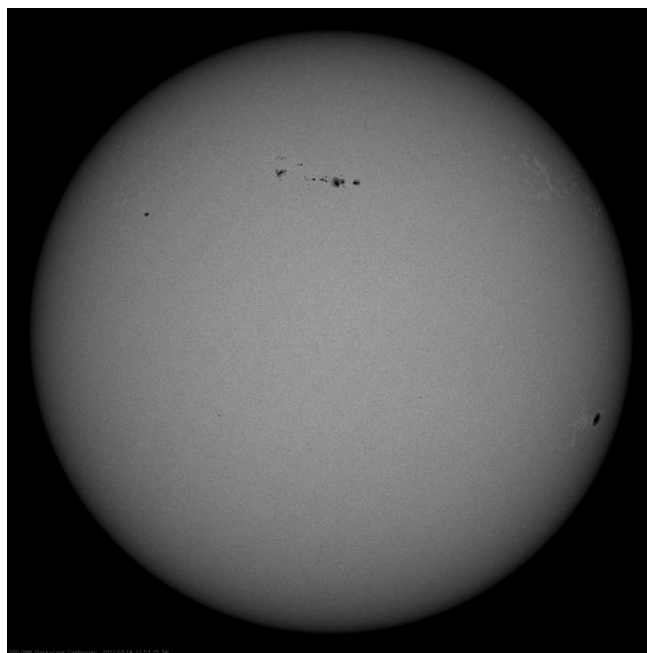


## Unistellar eVscope and the Sun

by Mark Fairfax

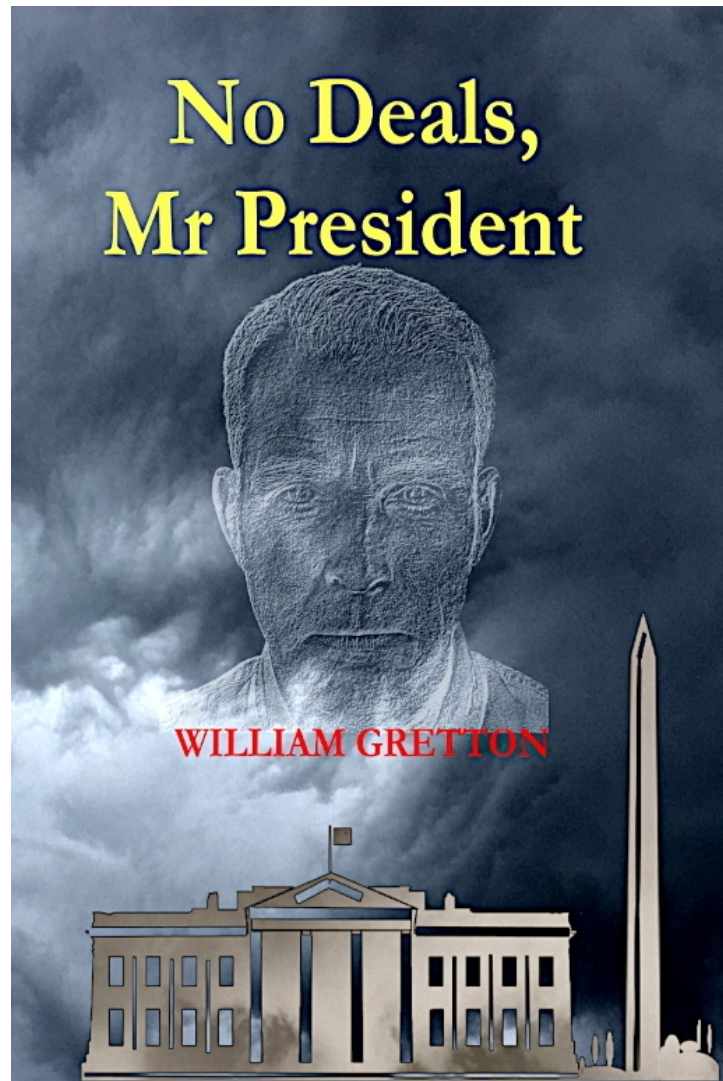
One of my first attempts at Solar observing with my eVscope, (in fact with any of my telescopes). MADE SURE THE SAFE SOLAR FILTER WAS FIRMLY IN PLACE OVER THE APERTURE OPENING. Then centred on the Sun using the 'shadow method', (moving the eVscope until its shadow on the ground is at its minimum which means you should be lined up or very close to being so), tracking is done manually using the Unistellar app.

eVscope 1 with Astrozap Baader Solar filter, 14th March 2022 at 12:21 from Fernwood, Newark. (The first image is mine and the second for comparison is The Sun Now from the NASA Solar Dynamics Observatory). **IMPORTANT** - You should never observe the Sun directly with the naked eye or with any optical apparatus that has not been fitted with a proper solar filter. And do not leave your eVscope outside in the Sun as you could damage it!





Introducing the Editor's first novel...



The **Cuban Missile Crisis** of 1962 was the closest the world came to total devastation, as nuclear superpowers squared up to each other across a geographic and ideological divide. In a return to that fateful year the hapless Roger Parnham, hoping to warn the world of danger, finds himself grappling with the consequences of his own ill-conceived schemes, as he becomes entangled with Soviet spies and Western agents – along with a string of complex young women – while events escalate to the brink of all-out war.

ISBN 978-1-3999-1856-5

Published by Elabrio Limited

Available on Amazon    Paperback edition £7.99  
eBook £2.99

and, in principle, at all bookshops.

## ADVERTISEMENTS

A seller called Scotty has two items for sale, located at Leicester, near Junction 21 of the M1. He is open to offers for each of the items. Contact: [bigman00008@hotmail.com](mailto:bigman00008@hotmail.com)

### 1. An Observatory







**2. A Skywatcher EQ3-2 mount**





---

## FOR SALE

Now that I have sold my telescope and gone over to electronically assisted observing, I still have some bits and pieces for sale. [The following are currently available:](#)

Tele Vue solar finder  
set of four coloured 1.25-inch filters  
1.25-inch oxygen-III filter  
1.25-inch 13% Moon filter  
2-inch 13% Moon filter  
2-inch broad-band light pollution filter  
2-inch narrow-band light pollution filter  
Geoptik variable artificial star for collimation

By the time you read this, some items may have been sold via my adverts on [astrobuysell.com](http://astrobuysell.com).

Please contact Sam Boote  
[sam@boote.myzen.co.uk](mailto:sam@boote.myzen.co.uk) or at Society meetings



## Telescope for Sale

I'm trying to find a home for a Sky-Watcher Mak 90EQ/TA telescope that a friend is passing along due to it not being used. It's mounted on a short tabletop mount, and all the parts are present.

Open to sensible offers. Contact me for more information.



Thank you,

Michelle Barnett  
[michellesbarnett@hotmail.com](mailto:michellesbarnett@hotmail.com)

# Nottingham Astronomical Society

Affiliated to the **British Astronomical Association**  
Member of the **Federation of Astronomical Societies**  
Supporters of the **Commission for Dark Skies**

---

**CHAIRMAN:**

**Julian Onions**

email: [chairman@nottinghamastro.org.uk](mailto:chairman@nottinghamastro.org.uk)

**VICE CHAIRMAN:**

**Richard Severn**

email: [vicechairman@nottinghamastro.org.uk](mailto:vicechairman@nottinghamastro.org.uk)

**SECRETARY:**

**Chris Sneddon**

email: [secretary@nottinghamastro.org.uk](mailto:secretary@nottinghamastro.org.uk)

**TREASURER:**

**Mike Provost**

email: [treasurer@nottinghamastro.org.uk](mailto:treasurer@nottinghamastro.org.uk)

**JOURNAL EDITOR:**

**Roy Gretton**

email: [journal@nottinghamastro.org.uk](mailto:journal@nottinghamastro.org.uk)

**MEMBERSHIP SECRETARY**

**Richard Severn**

email: [membership@nottinghamastro.org.uk](mailto:membership@nottinghamastro.org.uk)

**WEBMASTER:**

**Leigh Blake**

email: [leigh@nottinghamastro.org.uk](mailto:leigh@nottinghamastro.org.uk)

**OBSERVATORY DIRECTOR:**

**James Dawson**

email: [observatory@nottinghamastro.org.uk](mailto:observatory@nottinghamastro.org.uk)

**ORDINARY COMMITTEE MEMBER:**

**Andrew Green**

---

**Meetings**

Our formal meetings, often with an illustrated talk by a guest speaker, are held on the first Thursday of each month (except in August) at:

**Nottingham Emmanuel School  
Gresham Park Road,  
West Bridgford,  
Nottingham, NG2 7YF**

Doors open 7:15pm

**Meetings start 7:45pm**

Meetings end 9:15 pm

These meetings are open to the public, and visitors are welcome to attend, subject to a charge of £3 per meeting for adults.

**Annual subscriptions 2022**

Full	£30
Joint rate for partners living at the same address	£45
Under-18s and full-time students	£5

Subscriptions become due on 1<sup>st</sup> January. Half-price subscription is charged if joining after 30<sup>th</sup> June (minimum subscription £5).

Please make cheques payable to:  
*Nottingham Astronomical Society.*

---

If you would like more information about the **Nottingham Astronomical Society**, or would like to become a member, please contact the Secretary [secretary@nottinghamastro.org.uk](mailto:secretary@nottinghamastro.org.uk) or speak to any NAS committee member at one of the regular monthly meetings.

---

**The Nottingham Astronomical Society**

The Nottingham Astronomical Society, and/or the Editor accept no responsibility for any errors that may occur within this publication. Any views expressed in the **NAS Journal** are those of the individual authors and not necessarily endorsed by the Nottingham Astronomical Society, its Committee or Members.